

Bulletin



Promote the understanding of agriculture in our community to improve the profitability of farmers and enrich the quality of life in Knox County.

COUNTRY announces future plans, reaffirms commitment to Farm Bureau

COUNTRY Financial has announced changes to the underwriting requirements for non-farm clients in Illinois.

Starting Jan. 1, COUNTRY will no longer require an Illinois Farm Bureau membership for non-farm policies. COUNTRY clients who have farm-related policies will still need an IFB membership to maintain their policy.

Jim Jacobs, CEO of COUNTRY Financial, said the Bloomington-based insurance company operates in a highly competitive marketplace and its business practices need to remain "contemporary with current realities."

"We've consistently made and will keep making tough decisions," Jacobs said. "This decision is no different. And I'm confident that this is the right one for our clients, our agency force and COUNTRY."

COUNTRY has a longstanding history with IFB. The insurance company, created by IFB, was born in the 1920s during difficult economic times and from a desire to make sure farmers had access to adequate and reliable insurance. COUNTRY now provides insurance to nearly a million customers in 19 states.

"COUNTRY remains committed to Illinois farmers and their families, the Illinois Farm Bureau and county Farm Bureaus throughout the state," Jacobs said. "A strong Farm Bureau is a strong COUNTRY and vice versa. That's been true for a hundred years and will be true for another hundred years."

IFB President Brian Duncan said: "Illinois Farm Bureau understands the rationale for the changes COUNTRY recently announced. COUNTRY and Farm Bureau have a long and successful history together, and we will maintain our strong relationship into the future."

A meeting was held Sept. 11 with county Farm Bureau presidents and managers to discuss the changes. IFB announced a financial support program to county Farm Bureaus to provide certainty that programs and services to all members will not be impacted.

"IFB maintains a strong balance sheet, and the IFB Board has taken significant steps to ensure the long-term viability of our county Farm Bureaus that are vital in our efforts to serve the member," Duncan said. "We believe strongly in the value of the Farm Bureau membership for farmers and for nonfarmers and continue to evolve as the ag industry does."

Associate members will begin receiving separate dues notices from IFB for membership renewals. They will also receive information about how their membership provides "a place for all of us to stand together to protect Illinois family farmers as they grow a better future for our food, our communities, our environment and our next generation," Duncan said.

Associate members receive access to programs, education, events and discount programs, and also support Agriculture in the Classroom.

"Illinois Farm Bureau and county Farm Bureaus will continue to support our farmer members with impactful advocacy, trusted information and meaningful development," Duncan said.

IFB, the state's leading voice for Illinois farm families, has 365,535 members, of which 74,937 are voting members. For more information: COUNTRY clients with questions can visit www.countryfinancial.com/commongroundclient.

This article originally appeared in FarmWeek.

Steve Johnson Seminar set for November 19

Dr. Steve Johnson will be at the Knox Agri Center on Tuesday, November 19 at 7PM to present a marketing seminar titled "Managing Tight Crop Profit Margins".

Topics will include Understanding Global Supply, Demand & Crop Price Outlook, Implications for U.S. Elections & The Farm Bill, Estimating '24 Crop Profit Margins, Feature 7 Strategies to Manage Tight Margins, Utilizing Futures Price Seasonals & Crop Insurance, Implementing '24 & '25 Crop Market Strategies & Plans.



Steve Johnson

To reserve your seat, please call the Knox County Farm Bureau at 309-342-2036 or visit knoxcfb.org

West Central FS covers 2025 4-H Dues

For the 2025 4-H Year, West Central FS has once again covered the \$20 4-H dues for all members in Knox, Warren, Henderson, Fulton, McDonough, and Hancock counties in Illinois as well as Lee County in Iowa.

This year, 1,199 members are enrolled in 4-H in these counties, up from 1,096 in 2024. West Central FS also donates to each of the fairs and livestock shows with a \$1,000 premium per show. Knox County 4-H Coordinator Emma Eathington said, "We are incredibly grateful for the community's support of our 4-H members. Our county's enrollment is steadily increasing, driven by the community's enthusiasm and our members' eagerness to learn and grow. I truly appreciate all that this community does to encourage our members, and I am very proud of the strong support system that is shown to our kids in all that they do."



APPLICATION DEADLINE: November 1st

INTERVIEW DATE: December 3rd (Zoom)



APPLY TODAY



Members are always welcome at Knox County Farm Bureau's Board of Director meetings. They are held the third Thursday of each month. Please call for times.



October 2024 No. 10
Published Monthly by:
KNOX COUNTY FARM BUREAU, Inc.
cooperating with the
ILLINOIS AGRICULTURAL
ASSOCIATION
and the
AMERICAN FARM BUREAU
FEDERATION

The Knox Co. Farm Bureau Bulletin (ISSN 0892-1156) is published monthly with a subscription price of \$.50 per year. Periodicals Postage paid at Galesburg, IL 61401-9998

POSTMASTER: Send address changes to:
KNOX CO. FARM BUREAU
180 S. Soangetaha Rd.,
Galesburg, IL 61401.

BOARD OF DIRECTORS
DISTRICT I
Monica Stevens
Drew DeSutter
Brian Nelson
Damon Shea

DISTRICT II
VACANT
Lori Engel
Cory Link
Kyle Underwood

DISTRICT III
Aaron Link
Tom O'Connor
Jason Bollivar
Tim Eagle

DISTRICT IV
Phil Goedeke
Jennifer Beard
Jeff Grady
Michelle Erickson

DISTRICT V
Joel McCormick
Rob Emmons
Kurt Emken
Dustin Courson

Young Farmers Representative
Brandon Hall
Farm Bureau Staff
Executive Director - Hailey Hennenfent
Administrative Assistant - Kim Johnson
AITC Coordinators - Merris Hennenfent,
Roxanne Green
Manager, Affiliated Organizations:
Hailey Hennenfent - Mgr. Knox Agri
Center; Hailey Hennenfent - Reg. Agent,
Knox County Farm Bureau Foundation
Joe Youngman - Agency Mgr.
Country Financial
Jim McNelly - West Central FS
Telephone:
309-342-2036
Office Hours
Monday thru Friday
8:00 a.m. to 4:30 p.m.

We reserve the right to reject any or all news material or advertisements offered to this paper.
PLEASE REPORT ANY CHANGES IN YOUR ADDRESS TO OUR OFFICE

Thank You
KNOX COUNTY FARM BUREAU



Parts runs keep the farm running

The farmer's wife handed my husband a stick-style drawing. "He told me you will know what he needs," she said of her farmer husband while my husband paused at the brain teaser before him.

At the time, my husband worked behind a parts counter for a farm equipment dealership. The era pre-dated smart phones with capabilities of taking and sending photos, but we did have flip phones. So with a phone call to talk through the drawing, my husband figured out the farmer's need.

'Tis the season for the inevitable parts run. In Grubhub style, the run includes a

designated person driving to a retail location to pick up a part and deliver it to the farm. The act's level of urgency generally falls into one of two categories.

The "rainy day parts run" includes less-urgent parts related to general maintenance or fixing something non-critical to the machine's function while the rain prevents farmers from harvesting. It likens the pre-harvest repair and maintenance intended to prevent down-time.

The "emergency parts run" indicates a machine-down situation. The parts runner immediately abandons what they're doing to fetch a part with no opportunity to piggy-back extra errands on that trip to town. You get there. You get back. And then hope the part fixes the problem.

Getting there could take 20 minutes or it could consume a four-hour roundtrip that's still faster than Next Day Air. In the meantime, our mechanically minded team members prepare the machine to receive the part. If that repair exceeds our expertise, we call a

professional technician for help.

Ideally, the fix is as simple as fetching the part. But sometimes, parts runners return with the wrong parts due to human error in the ordering process. Occasionally, runners unknowingly retrieve an incomplete order that requires a return trip. Worse yet, the fetched part doesn't fix the problem.

Technology generally improves the accuracy of parts orders as farmers can review web-based parts schematics to identify the exact part numbers. Sharing smartphone photos helps parts departments with diagnosis and identification. Bringing in the broken part is almost a sure win for an identical replacement, so blown hydraulic hoses often make the trip.

My husband recalls an unusual parts pickup in which a farmer who lived hours away by car landed a helicopter in the dealership's parking lot. The farmer ran inside for his parts and left within seconds. It's an extreme case, but machine-down times call for machine-down measures to keep the farm running.

Getting To Know Your Farm Bureau Policy

16. DISPOSAL OF WASTE

We support:

Waste volume reduction at the source. Every effort should be made to avoid generating waste products.

Recycling and reuse. We encourage manufacturers to develop cost-effective uses for recyclable products. We will work towards the development of incentives to create additional markets and uses for these recycled products.

Retailers and consumers using returnable, recyclable, and degradable containers.

Research on voluntary recycling options for agricultural plastics.

Source separation, which includes:

A. Incentives for the return of all glass, plastic, or metal beverage containers.

B. Local recycling programs.

C. Composting. We support research on the effects of using yard waste on agricultural land.

Research on the effects of energy recovery from incineration.

Combustion for volume reduction. Where it can be shown to be economically feasible and environmentally safe, incineration of solid waste before disposing in a landfill.

Landfilling as a final alternative.

Legislation specifying that publication requirements for public hearings on the siting of solid waste disposal facilities be the same as those of the Illinois Truth in Taxation Act.

The ability of a municipality to reject the location of a landfill within 1 1/2 miles of the municipality's boundary.

Appropriate local governments providing

refuse disposal services at a reasonable cost to residents within their area if no private services are available.

Improvement of regulations to ensure safe transportation of hazardous waste.

Enforcement of existing laws and regulatory programs which require environmentally safe waste disposal systems.

14. Encouraging county Farm Bureaus to actively monitor permit applications for siting of nonagricultural pollution control facilities submitted to their County Boards.

15. Delegation agreements granting counties authority to regulate landfill operations within their jurisdiction, including hours of operation and the height of landfills.

16. Efforts to impose appropriate fines and penalties on waste disposal violations.

17. Reasonable disposal fees on residential waste to help avoid dumping in rural areas.

18. Allowing local governments to charge a higher fee, tax or surcharge on special waste and out-of-area waste than on local residential waste.

19. Efforts to have Illinois classify out-of-state waste as stringently as its classification in the state of origin.

20. Regular and thorough inspection of waste disposal sites.

21. "Landfarming" of contaminated soils to preserve limited space available in landfills.

22. Research into laser gasification for mining of landfills and disposal of garbage.

23. Allowing farmers to burn or bury old agricultural buildings and brush on existing

sites.24. Allowing the burning and burying of building debris in cases of natural disasters.

25. Changes to the laws and policies regarding used tire collections, including:

A. An increase in the number of times an individual can participate in a tire clean-up event.

B. Allowing non-governmental organizations to sponsor a used tire collection program.

C. The Illinois Environmental Protection Agency (IEPA) setting up drop off areas for used tires.

26. Investigation into alternative methods for disposal of urban sludge containing heavy metals and continued research on the safe application of urban sludge on agricultural farmland. Agencies should make research results on immediate and long-term effects of sludge application available to farmers.

27. An environmentally safe and financially acceptable method to dispose of or recycle used oil and unwanted farm and home chemicals.

We oppose:

1. Transportation of solid waste over long distances for disposal.

2. Efforts which lead to the importation of solid waste into rural areas without proper consideration being given to residents neighboring the disposal site.

3. Attempts to weaken the role of local governments or the criteria by which the sites are judged in the siting of non-agricultural pollution control facilities.

How A Combine Works

During harvest season, combine harvesters can be found all over Illinois fields. This machine has changed the farming industry by combining several steps in the harvesting process – reaping, threshing, and winnowing – into one revolutionary machine. But how do they work?



These area businesses are proud to be a part of our 2024 Discount Program for members of the Knox County Farm Bureau®

The Knox County Farm Bureau does not intend the Membership Discount Program as an endorsement to any businesses or products/services on which discounts have been obtained, and assume no liability for any service rendered under the Membership Discount Program. Benefits may change without notice and some restrictions may apply.

| | | | |
|---|---|--|--|
| <p>URBAN MILLING CO. SAW MILLING • WOOD SLABS • CUSTOM WOODWORK • EQUIPMENT RENTAL 10% Off Any Service 248 E. Simmons St. Galesburg, IL 61401 elvith@urbanmillingco.com (309)-368-7437</p> | <p>The PIZZA HOUSE 132 E Simmons St Galesburg (309)343-8376 \$2.00 Off a Large Pizza One discount per order Void with any other coupon</p> | <p>224 E Main St - Galesburg (309) 341-0842 \$10.00 OFF WITH A \$100.00 PURCHASE Not to be combined with any other discount Sabrina's Bridal and Prom</p> | |
| <p>Up to 30% Off Ag Related Parts Use account # 11110 for Discount Thanks for supporting your locally owned NAPA Store. • Filters • Belts • Bearings • Hydraulic Hoses • Etc.</p> | <p>10% Off Any Serta Perfect Sleeper Mattress 400 E Main St (309) 342.2181 LINDSTROM'S Main & Seminary - Downtown Galesburg</p> | <p>HENN HOUSE BBQ Phil & Johanna Hennenfert (309) 315.4744 phil@hennhousebbq.com www.hennhousebbq.com 10% Off Catering or Bulk Meat Purchases</p> | |
| <p>10% Off Lawn Care Applications for New Customers Their First Year Liqui-Green 10% Off Tree & Shrub Feeding first time service for Current Customers Lawn & Tree Service (309) 341.0800 liquigreenofgalesburg@gmail.com</p> | <p>Kohl's DIAMOND GALLERY -Free Ring Cleaning & Inspection -\$.80 Watch Battery 370 EAST SIMMONS GALESBURG 309.344.EVER M - TH 9 - 5:30 SAT 9 - 5 YOUR FULL SERVICE HOMETOWN JEWELER</p> | <p>10% Discount on Purchase 120 Hidden Drive Galesburg, IL 61401 (309) 289-2948 hiddenhillswinery@gmail.com HIDDEN HILLS VINEYARD AND WINERY</p> | |
| <p>Hardee's BUY A FAMOUS STAR OR SUPER STAR 913 E MAIN ST GALESBURG, IL 61401 GET A FREE SMALL FRY & FREE SMALL DRINK</p> | <p>Gailey Eye Clinic 834 N Seminary St - Suite 103 & 105 Galesburg, IL 61401 GaileyEyeClinic.com 309.343.6000 \$1,000 OFF LASIK & 20% OFF Glasses Cannot be used with insurance. Other restrictions may apply.</p> | <p>HAPPY JOE'S 1964 N Henderson St Galesburg, IL 61401 (309) 344.3121 \$4.00 OFF ANY LARGE PIZZA \$2.00 OFF ANY MEDIUM PIZZA (not good in conjunction with any other offer)</p> | |
| <p>10% Off Any Wireless Accessories ClearSound Hearing Deborah Dyer, B.A., HIS Licensed Hearing Instrument Dispenser 383 E Simmons St - Galesburg, IL 61401 (309) 342.0458</p> | <p>FOUR SEASONS PEST CONTROL Four Seasons Pest Control, Inc. Call (309) 342-9644 10% Discount on Initial Services</p> | <p>63 N Seminary St Galesburg, IL 61401 (309) 342.9197 BRESLIN'S FLOOR COVERING Since 1948 10% Discount on Non-Sale Carpet!</p> | |
| <p>BARD OPTICAL -Eye Exams only \$48 -Save 25% on Frames -Lenses & Add-Ons 10-30% Off 21 Offices in Illinois - Call Today for the Office nearest you (800) 752-329 Visit our Website at www.bardoptical.com</p> | | <p>10% Discount 2171 IL-8 Yates City, IL 61572 BEDNAR CHIROPRACTIC 1113 Court St. Pekin, IL 61554</p> | |
| <p>To place an order call 1-800-Grainger or visit: www.grainger.com/content/farmbureau GRAINGER FREE Standard Ground Shipping on standard Grainger Products Illinois Farm Bureau account number #853007128</p> | <p>CASE III AGRICULTURE 2 Tier Discount Purchase or Lease Program - \$200 and \$500 levels Visit www.ilfb.org or call your County Farm Bureau</p> | | |
| <p>ScriptSave WellRx SAVE up to 75% on prescription medicines at participating pharmacies, nationwide Contact the Farm Bureau Office at 342.2036 for details.</p> | <p>STILL AVAILABLE!! Knox County Farm Bureau 180 S Soangetaha Rd Galesburg, IL ● 2022 Plat Books ● 2022 Wall Maps</p> | | |



ONE STOP SAVINGS

Log in to our new membership benefit platform using your county Farm Bureau membership number at <https://ilfb.abenity.com>

HOW TO:

First time users:
Click Register button
Membership Number, do not include any letters

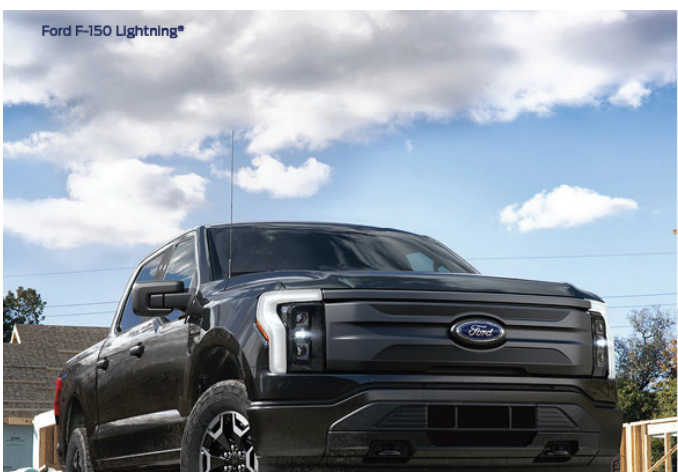
Knox County Farm Bureau®

Last name, First name
Last name, First name

Memb# 048-19719 A
Exp. Date 04/30/2017

ILLINOIS AGRICULTURAL ASSOCIATION®
ILFB.ORG

RESTUARANTS CONCERTS ZOOS GIFTS FLOWERS FASHION SPORTING EVENTS TRAVEL HEALTH



Farm Bureau Members Receive a **\$500 Exclusive Cash Reward*** on an Eligible New Super Duty®, F-150®, Ranger®, Maverick®, or F-150 Lightning®



*Visit FordRecognizesU.com/FarmBureau today for complete offer details!



Helping families, farmers and businesses since 1925



Michael White
Galesburg
(309)342-3177



Patrick Young
Galesburg
(309)342-5316



Ed Johnson
Galesburg
(309)342-1646



John Ryner
Galesburg
(309)342-1625



Doug Atwater
Knoxville
(309)948-7943



Jeremy Kleine
Galesburg
(309)342-3177

"COUNTRY Financial®" is the marketing name for the COUNTRY Financial family of affiliated companies (collectively, "COUNTRY"), which include COUNTRY Life Insurance Company®, COUNTRY Mutual Insurance Company®, and their respective subsidiaries, located in Bloomington, Illinois.
1220-510HC_13581-9/16/2024



September KCFB Board Highlights

The meeting of the Board of Directors of the Knox County Farm Bureau was held on September 19.

Education & Outreach – Lori Engel

Start collecting ideas for Adult AITC.

Farm Business – Brian Nelson

2022 Plat Books are available in the office. Plat Books are \$30 for members and \$50 for wall maps for members.

Government and Policy – Kyle Underwood

Sign up for FB Act text alerts by texting the word FARM to 52886.

Member Relations – Joel McCormick

KCFB met the 2024 Quota ending with 817 MM, 15 MS, 22 PM, 1,773 A Members.

Young Farmers – Brandon Hall

Yates City Festival asked YF to hold a pedal pull on August 17th. Scott Hennenfent and Pat's Pedal Pullers had the pulls at 1PM with 37 kids. Hunter Safety Course was August 23 and 24. Cosponsoring with Pheasants Forever. Cover Crop Field Day was September 6th. Williamsfield Ag Day was September 8. Young Farmers served ice cream. Young Farmers met September 12 for their monthly meeting.

PrimeTimers – Hailey Hennenfent

PrimeTimers met on August 20 to learn

about Monarchs from Teresa Sanford-Shipplett. The next meeting will be September 17. PrimeTimers is always looking for new members, 55+.

Foundation – Hailey Hennenfent

The KCFB Foundation met on August 27 for their quarterly meeting. Williamsfield FFA was awarded \$5,000 towards the purchase of a laser cutter/engraver. The Knox County Fairgrounds was awarded \$10,000 towards the new community building. Next quarter Ag in the Community Grant Applications are due November 1, 2024.

KAC – Hailey Hennenfent

The Knox Agri Center met on August 27 for their quarterly meeting. A new plaque for the Meritorious Service to Ag Award will be installed soon. All HVAC units were inspected and had maintenance done as needed. The Roof Inspection was finally available.

OLD BUSINESS

Knox County Farm Bureau will have 5 goals to submit to IFB in October.

NEW BUSINESS

The Executive Board will serve as the voting delegates for the 2024 IAA Annual Meeting.

KCFB Board Attendance 2024

| | July | August | September |
|--------------------|------|--------|-----------|
| Beard, Jennifer | P | P | A |
| Bollivar, Jason | A | P | P |
| Courson, Dustin | P | A | A |
| DeSutter, Drew | P | P | P |
| Eagle, Tim | P | A | P |
| Emken, Kurt | P | P | A |
| Emmons, Rob | A | P | A |
| Engel, Lori | P | P | P |
| Erickson, Michelle | P | A | P |
| Goedeke, Phil | P | P | P |
| Grady, Jeff | A | P | A |
| Hall, Brandon | P | P | A |
| Link, Aaron | P | P | P |
| Link, Cory | A | P | P |
| McCormick, Joel | P | P | P |
| Nelson, Brian | P | P | P |
| O'Connor, Tom | P | P | A |
| Shea, Damon | A | A | A |
| Stevens, Monica | P | P | P |
| Underwood, Kyle | A | A | P |

(P) Present

(A) Absent

(C) Cancelled

AGENT SPOTLIGHT

Name: Michael J. White
Years with COUNTRY: 40 Years
Office Address: 415 N Henderson St., Galesburg, IL 61401
Phone: 309-342-3177 office; 309-621-3088 cell; Text
eMail Address: michael.white@countryfinancial.com
Designations: MDRT; Million Dollar Round Table 2014 and 2016, Life Underwriting Training Council Fellow; LUTCF
Community Service: Mike is a past President of Western Illinois Estate and Financial Planners. He is a member of the Galesburg Rotary, Paul Harris Award recipient and has been active in many community organizations in the past. He is US Jaycee Senator, and past President of the Galesburg Jaycees. He coached baseball locally for 16 years and served as Commissioner of the Babe Ruth Leagues for 6 years. He is a Past President of the Galesburg Athletic Booster Club. For several years he served Chrysalis and Cursillo as a leader.
Awards: Mike was inducted to COUNTRY Financial's Hall of Fame in February 2014. Mike has qualified for the All-American Award from COUNTRY 23 times. He was recognized by COUNTRY for his community service in 1996 with the Award of Excellence.
Mission Statement: "I help people remove worry from their lives. My goal is to help my clients plan to live to 100 and prepare for a crisis in their life tomorrow."

Michael J. White

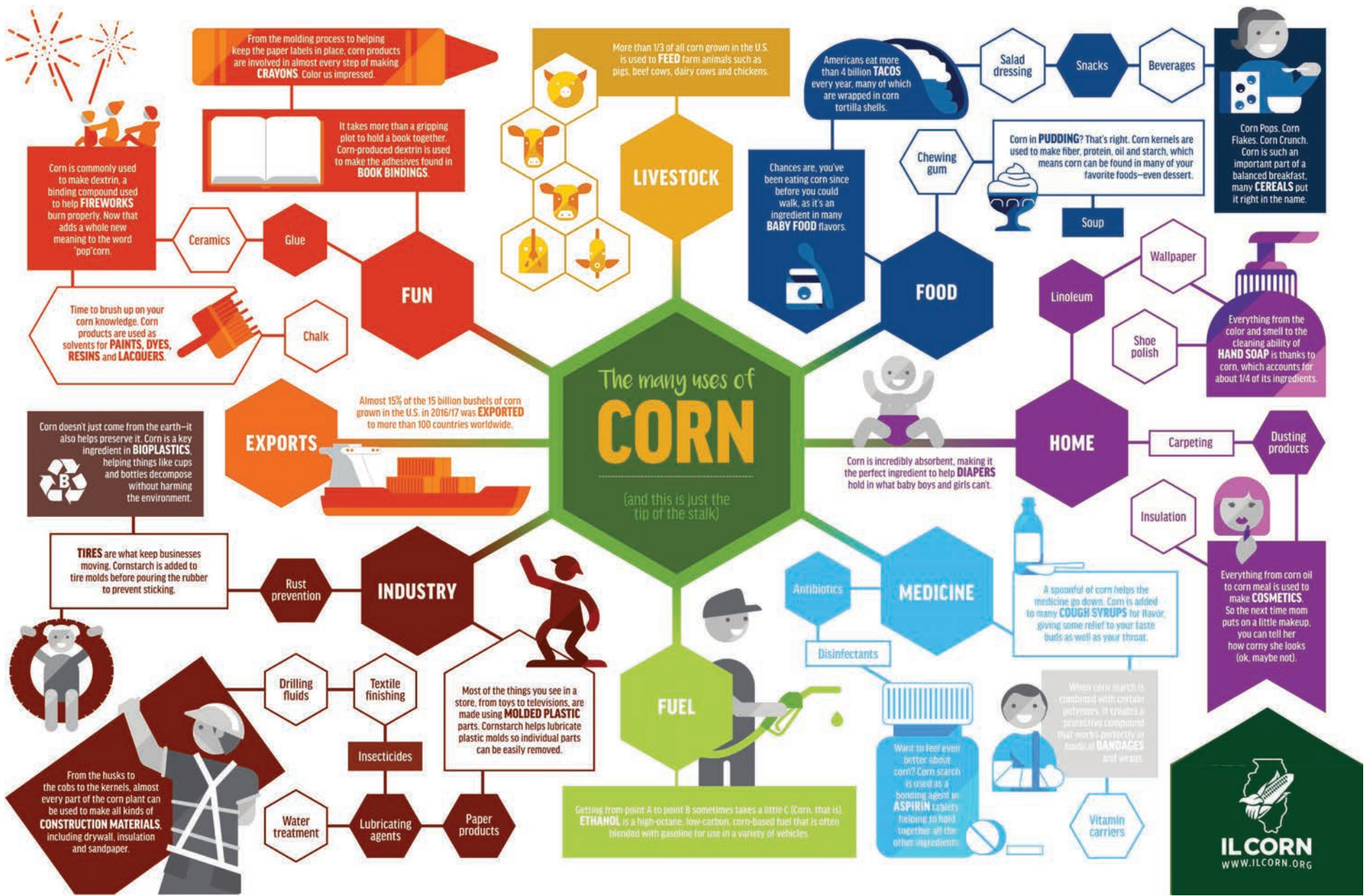
THE BEST FUEL JUST GOT BETTER

GREATER PROTECTION

Diesel[®] Gold

GET YOUR FILL - CALL WEST CENTRAL FS
877-833-9237

westcentralfs.com



Rooted in Ag. Grounded in Banking.

CALL ME TODAY FOR YOUR AG NEEDS!

Leah Glaser
Ag Loan Officer

Office: 309.742.3711
Cell: 309.213.5592
lglaser@fsbelmwood.com

Farmers State Bank
104 E. Main St. | Elmwood, IL 61529 | 309.742.3711 | www.fsbelmwood.com

Member FDIC

WE NEED NEW RECIPES!

The Knox County Farm Bureau is on the search for **NEW** recipes to be printed in our monthly Bulletin!

If you have a special recipe you'd like to share and have printed in the Bulletin, please send it to Kim:

Email: assistant@knoxcfb.org
Mail: Knox County Farm Bureau
180 S Soangetaha Rd. Ste 101
Galesburg, IL 61401
Or drop it by our office!

KNOX COUNTY FARM BUREAU

Peoria Appraisal Service

6121 W Challacombe Road
Edwards, IL 61528

Herbert M. Meyer, ARA
Accredited Rural Appraiser
Phone 309-989-4007
Email: Peoriaappraisal@outlook.com
Certified in IL, IN, IA, MO

Offering high-yielding corn and soybean genetics, including the new Enlist E3™ soybeans.

TIM EAGLE, Knoxville, Illinois
Independent Sales Representative
309.368.0581 | tweagle@stineisr.com

Health on the Farm

By the Knox County Health Department



Breast Cancer Awareness Month

For nearly four decades now, October has been recognized as National Breast Cancer Awareness Month. It is a time annually devoted to educating everyone about breast cancer and the importance of early detection and access to timely, high-quality care.

The National Breast Cancer Foundation, Inc. reports that one in eight women in the United States (U.S.) will develop breast cancer in her lifetime. Presently, in 2024, it is estimated that 310,720 new cases of invasive breast cancer will be diagnosed in women in the U.S. Breast cancer is also the second leading cause of cancer deaths in U.S. women, behind lung cancer.

Although rare, men are also impacted by breast cancer. According to the American Cancer Society, an estimated 2,800 men will be diagnosed with invasive breast cancer in the U.S., and the lifetime risk of a U.S. man developing breast cancer is one in 726.

But there is hope. When caught in its earli-

est, localized stages, the National Breast Cancer Foundation, Inc. reports that the five-year relative survival rate for breast cancer is 99%. Advances in early detection and treatment methods have significantly increased breast cancer survival rates in recent years. Currently, there are over four million breast cancer survivors in the United States.

Importance of early detection

Breast cancer typically has no symptoms when the tumor is small and most easily treated, which is why annual breast cancer screenings, including mammograms for women 40 and older, are crucial for early detection.

Know the Signs and Symptoms of Breast Cancer

The most common sign is a new lump or mass in the breast, but other early indicators of breast cancer may include:

- Swelling of all or part of a breast (even if no lump is felt)
- Skin dimpling (sometimes looking like an orange peel)
- Breast or nipple pain
- Nipple retraction (turning inward)
- Nipple or breast skin that is red, dry, flaking, or thickened
- Nipple discharge (other than breast milk)
- Swollen lymph nodes under the arm or near the collarbone

These symptoms could signal breast cancer or other health concerns. It is important to have any new breast mass, lump, or other change checked by an experienced healthcare professional so that the cause can be found and treated if needed.

The Illinois Breast & Cervical Cancer Program (IBCCP) offers qualifying women free breast and cervical exams. Since 1995, this

program has provided essential screenings, including mammograms and Pap tests, to qualified women in Illinois.

Eligibility criteria include:

- Residency in Knox, Warren, or Henderson County
- Age between 40 to 64
- Must be without insurance or with insurance that does not cover breast and cervical cancer screening
- High deductible insurance assistance for breast and cervical cancer diagnostic testing
- Breast exams and mammograms for women aged 40-64, and pap test and pelvic exams for women aged 21-64

The Knox County Health Department has a Clinical Patient Navigator available to help enrolled participants access timely screenings, diagnostic services, and treatment continuity.

For more information on breast health or available programs, please contact the Knox County Health Department at 309-344-2224 or visit their website at www.knoxcounty-health.org.

WELCOME NEW MEMBERS
The Knox County Farm Bureau would like to welcome the following to our organization

- Tristan Aldridge
- Ann Bindseil
- Robert Davis
- Robert Dunn
- Phillip Hendricks
- Chuck Hungerford
- Michael Johnson
- Jeffrey & Amanda Oeth
- Pamela Robinson
- Connie Rucker
- Sue Smith
- Rebecca Webster
- James Roberts
- David Sparks



Illinois Breast and Cervical Cancer Program

Serving Knox, Warren & Henderson Counties

Breast Exams and Mammograms for women age 40-64
Pap Test and Pelvic Exams for women age 21 -64

Must be without insurance or with insurance that doesn't cover breast and cervical cancer screening.

High Deductible Insurance Assistance for Breast & Cervical Cancer Diagnostic Testing



Knox County Health Department
1361 W. Fremont St.
Galesburg, IL 61401
309-344-2224
www.knoxcountyhealth.org



What's happening with Ag in the Classroom this fall?

The beginning of the school year found Mrs. Green in kindergarten classrooms across Knox County. To welcome fall, she brought the book Hopefully the Scarecrow by Michelle Hoots to read to the students. Along with her book, Mrs. Green brought a corn stalk and corn kernels to share with students.



not sweet corn or popcorn. They also learned about many products made from the corn our Knox County farmers grow.

Students were amazed at the size of the plant and stood next to it to compare their height. They could not imagine how many kernels filled an ear of corn, but soon learned on average, there are 800 kernels to an ear! Students helped Mrs. Green count kernels for the class. They would be able to investigate their shape and texture after the visit.

Before reading the story, students learned that our farmers are harvesting field corn,

At the end of the visit, each school received a copy of Hopefully the Scarecrow for their library. The book for each library was made possible by some special donors. Knox County Ag in the Classroom would like to thank: IGM, Diamond Ag, Corn Growers, J & J Farms (Matt & Mark Johnson), Compeer, West Central FS and Country Financial.



Mrs. Pickrel, Steele Elementary

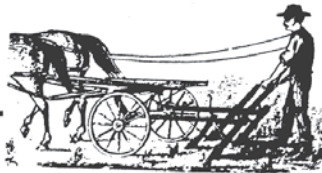


Mrs. Washabaugh, Steele Elementary



Miss Erickson, ROWVA

Looking Back



October 1967

The Legislative Committee of the Farm Bureau sponsored five area meetings throughout the county in an effort to sample the opinion of Farm Bureau members and establish the policy for the organization. Participating in group discussion at the Maquon meeting are, from left to right, Robert Bird, Dwight Clark, Paul Platt, chairman of the legislative committee, Lewis Sprecher, director from Elba Township, and Donald May. The policies established by Knox County will be submitted to the tentative resolutions committee of the Illinois Agricultural Association for action during the IAA Annual Meeting by the voting delegates.



- Carpet & Furniture Cleaning
- Maid Services
- Expert Janitorial Services

2335 E. Second Street
Galesburg, IL 61401
309-342-3611

PrimeTimers News

PrimeTimers met on September 17 for a potluck and presentation on prairie plants by AITC Coordinator Merris Hennenfent. The next meeting will be at Prairie Moon Farm on October 15 with lunch in Knoxville. Please call the office to be added to the mailing list if you would like to join. Members 55 and older are welcome to join!

MEMBERSHIP RECRUITER OF THE MONTH

The Knox County Farm Bureau would like to recognize COUNTRY Financial Representative, Jeremy Kleine as the top membership recruiter in September. Jeremy signed four new Associate Members. Call your COUNTRY Representative for all your insurance and financial needs.



Jeremy Kleine

~ CLASSIFIED ADS ~

To place ads in the Bulletin or on the website, you must be a Knox County Farm Bureau member. Call 309-342-2036 or email us at assistant@knoxcfb.org by the last Friday of each month to place your ad.

FOR SALE: Black + Decker Arm Saw \$125, Black + Decker Table Saw \$125, Black + Decker Band Saw \$50, 20 Iron Wagon Wheels \$25 each. Call (309) 335-1316

FOR SALE: 10 Sheets 4x8x1 Foam Insulation - \$25 each. Call (309) 341-4680

FOR SALE: 10 Storm Windows w/ screens 35in x 56 1/4in surface

mount - \$25 each, Take ALL. Call (309) 341-4680

FOR SALE: Pull Behind Lawn Sprayer - \$25. Oak Knee-hole Desk w/ 7 Drawers, needs refinished - \$40. Call (309) 341-4680

FOR SALE: 5 Drawer Chest of Drawers - \$15. Call (309) 341-4680

If you sell your items, please contact the Knox County Farm Bureau office at 309-342-2036 or email assistant@knoxcfb.org, so we can provide our readers with up-to-date information.



GALESBURG LUMBER & CONSTRUCTION SUPPLY, LLC

- Free Delivery in town
- Personal Customer Service
- Locally owned and operated
- Premium Lumber, Windows, Cabinets, Doors, Countertops
- Ardex, W.R. Meadows
- Milwaukee tool products
- Special order products
- Competitive pricing

Phone: 309-342-5185
Email: sales@galesburglumber.com

161 N. Academy St.
Galesburg, IL 61401

Monday-Friday 7:00 am - 4:30 pm



PEACE OF MIND, ONE INSPECTION AT A TIME. CUSTOMIZED MAINTENANCE INSPECTIONS

- ✓ 12-Month CNH Parts Warranty
- ✓ Ongoing 10% Labor Discount
- ✓ No Service Call
- ✓ In-Season Job Priority
- ✓ CMI Certified Decal
- ✓ Multi-Point Inspection

Reach a new level of protection with a Birkey's Certified CMI on your tractor, planter, combine, cornhead or platform.



664 US Highway 150 E • Galesburg, IL 61401
(309) 341-4360 • www.birkeys.com

SIGN UP TODAY AT BIRKEYS.COM/CMI

Case IH is a trademark registered in the United States and many other countries, owned by or licensed to CNH Industrial N.V., its subsidiaries or affiliates. Subject to credit approval. Terms and conditions apply.



SWANSON SEEDS

Channel. Seedsmanship At Work. NOW OFFERING PIVOT BIO! PIVOT BIO



FULL SELECTION OF SEED FOR LAWN, AGRICULTURE, PASTURE & WILDLIFE MIXES, FORAGES, SMALL GRAINS, AND MORE

BRETT SWANSON / ONEIDA / BKS@SWANSONSEEDS.COM / 309-368-9737

RiverBottom Tree Service

Climbing *IS* Our Specialty

- Trimming • Removals
- Storm Damage Clean up
- Lot and Brush Clearing
- 55' Bucket

FULLY INSURED • FAST FREE ESTIMATES
24 HOUR EMERGENCY SERVICE



John Howard - Knoxville, IL 309-371-1999

Bank of Yates City
 Over 153 YEARS OF SERVICE
 TO AREA FARMERS



Phone: 309-358-1415
 Fax: 309-358-1495
 www.bankofyatescity.com
 BOX 246 - YATES CITY, IL 61572

ATTORNEYS FOR AGRICULTURE

"Rip" Everett, Jr. Robert Lindstrom



Galva: 110 North Exchange St (309) 932-2001
 Galesburg: 5 East Simmons (309) 341-6010



EL EGAN LAW
 Patrick C. Egan · Attorney
 EGAN LAW, LLC

Hawthorne Business Center
 2101 Windish Drive
 Galesburg · Illinois · 61401

pat@patrickeganlaw.com Legal Assistants:
 Phone: (309) 343-5010 Amy K. Bowman
 Fax: (309) 343-5012 Jennifer E. Allgeyer

Electro
Mechanical
Resources



Service & Sales

ELECTRIC MOTORS - BEARINGS - BELTS - PULLEYS - CONTROLS

103 West Martin St. Phone: 309-462-3200
 Abingdon, IL 61410 Fax: 309-462-9266

email: emrinc@mchsi.com

Illinois **FBFM** Association

Farm Business Decisions Through

- Farm Records
- Comparative Analysis
- Tax Preparation
- Financial Consulting

Serving Knox County
 Toulon - (309) 286-2811

Eliza Lilliman Kagnie Hoffman
 Brett Goodwin Nick Leezer Jed Metzger

GALESBURG LUMBER & CONSTRUCTION SUPPLY, LLC

- Lumber
- Ardex
- Milwaukee Tools
- W.R. Meadows

161 N Academy St
 Galesburg, IL 61401

Phone: 309-342-5185
 Email: sales@galesburglumber.com

Local Service Delivery Specialty

HENDRICKS Pump Service, Inc.

COMPLETE WATER SYSTEM
 DEEP AND SHALLOW WELL PUMPS

- Licensed Pump Installers
- Livestock Waterers
- Water Softeners & Filters
- Trencher/Backhoe
- Pump Rig
- Sales & Service (all make pumps)

DOUG HENDRICKS • ANDY HENDRICKS
 2050 Grand Avenue, Galesburg, IL 61401 • 309-342-2817

KING CONTAINER SERVICE

Roll Off Dumpster Service

Patrick King PO BOX 85 Oneida, IL
 309-351-1456
 kingcontainerservice@gmail.com

Mayfield's Backhoe Service

- Backhoe
- Bulldozer
- Skidsteer
- Dump Truck
- Concrete Work
- Field Tile Repair
- Driveways & Grading
- Demolition & Brush Hogging



309-351-9520
 Eric Mayfield
 Knoxville, IL

HYDRAULIC INDUSTRIAL PRODUCTS

1020 S. Henderson St.
 Galesburg, IL 61401
 WWW.HIPIND.COM
 309-342-9555

Hoses - Fittings - Adapters
 Hydraulic Cylinder Repair
 Filters & Filter Cleaning

Division of **Midstate** Manufacturing Co.

Walt Dagen CONSTRUCTION

WE DESIGN AND BUILD GRAIN DRYING AND STORAGE SYSTEMS

Randall Blair (309) 368-5453
 Greg Coleman (309) 945-6605

2365 Grand Avenue
 Galesburg, IL 61401

contact@dagenconst.com
 www.dagenconstruction.com

Buildings Of All Kinds For Farm And City Needs



Justin McKeown
 STRUCTURES MARKETING SPECIALIST

GALESBURG:
 800-282-5242
 309-343-1600
 Cell - 309-221-9780

Wight CHEVROLET CO



WILLIAMSFIELD, IL.
 309-639-2282

www.wightchevrolet.com

YEMM



2195 N HENDERSON ST
 GALESBURG, IL 61401

309-344-2727
 www.yemmauto.com

AGRICULTURAL BANKING SOLUTIONS



Cultivating the full potential of Farm and Agribusiness Operations for more than 75 years.

Douglas Slaton 309-315-5305
 Rebecca King 309-315-5301

Member FDIC

ARMOUR ROOFING, INC.

SERVING BUSINESSES & FARMS SINCE 1983

RYAN & AMANDA CRUISE 309-635-5420 CELL

MACHINE SHED & BARN PAINTING
 METAL ROOF REPAIRS & WATERPROOFING
 GRAIN BIN SEALING

www.ArmourRoofingInc.com
 MyArmourRoofing@gmail.com

309-879-2634 OFC. DAHINDA, IL

Winship Farm Management



309-335-6262
 Harold Winship
 P.O. Box 26
 Putnam, IL 61560

Email: Winshipfm@gmail.com
 WinshipFarmManagement.com

PROUD NEW MEMBER OF PARALLEL AG

ACM Wataga, IL
 A.C. McCARTNEY 309-375-6661
 Serving Customers Since 1950!



www.acmccartney.com